

UPCERA



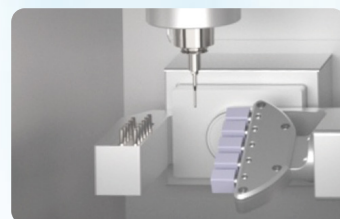
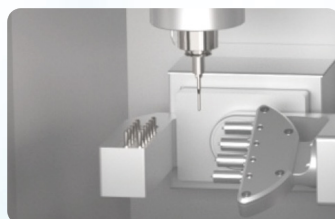
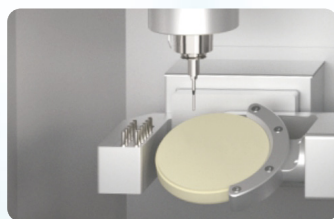
A52W

The 5-Axis Wet Milling Powerhouse

Reliable Materials Expert

A52W

The 5-Axis Wet Milling Powerhouse





- Build-in solid water tank
- Reliable capacitive touch screen, user-friendly UI
- Applicable with 4 units of Pre-milled Ti base or 5 units of glass ceramic block
- Stable and powerful spindle ensures high precision results
- Protection module against power failure and low air pressure
- 24-hour non-stop machining

Materials



Zirconia

Glass ceramic

Pre-milled Ti base

PMMA

Wax

PEEK

Device Parameters

Specification	Parameters
Dimensions	55*49*75 cm
Weight	110 KG
Voltage	220V/50Hz ; 110V/60Hz (optional)
Power	1.0 KW
Compatible Compressed Air	0.5-0.8 MPa
Spindle Speed	80,000 rpm
Tilt Angle	A axis: $\pm 360^\circ$, B axis: $+33^\circ -35^\circ$
Precision	<0.01 mm
Number of Bur	12
Cooling Type	Water cooling (Built-in water tank)
Materials	Glass ceramic, Pre-milled Ti base, PEEK, PMMA, Zirconia Wax ($\Phi 98.5\text{mm}$, thickness of 10mm-30mm)
Milling Speed	Pre-Milled abutment (40 minutes/pc), Glass-ceramic (10~30 minutes/pc), PEEK, PMMA (10 minutes/pc) Wax (3 minutes/pc), Framework (Wax / PEEK, 45/150 minutes/pc)
Application	Coping, crown, bridge, inlay, onlay, veneer, post-core crown, dental framework, telescope denture, customized abutment and the crown on it, the restoration above the implant